

21/7-4/8/2018



PARTICIPATION CALL

PARTICIPATION CALL

RIJEKA, CROATIA

30 WORKSHOPS

TWO WEEKS

500 STUDENTS

ONE COMMUNITY

prefix, occurring originally in loanwords from Latin, used with the meaning 'again' or 'back'.

RE means acknowledging the presently or formerly existing and acting upon it.

RE is dealing with the past or present to sort things out for the future.

RE is aware of the circular nature of reality and interconnection of things.

RE ackles the matter at hand for the sake of revealing a different kind of order or value.

RE:

**THERE IS NO AESTHETICS
WITHOUT ETHICS.**

Architects should, naturally,
put an emphasis on the socially,
economically and environmentally
sensitive attitude and its priority
in design. However, each time has
their own understanding of these
terms - we aim to examine ours.

RE: EVALUATE

RE: CONSIDER

RE: THINK

WE DON'T BELIEVE IN TRASH.

We are digging into new dimensions of usefulness in order to find value, meaning and potential in the endless amounts of waste, in all its forms: wasted material, abandoned spaces, wasted time. Architects need to reconsider their role and attitude in this hyperproduced reality - to reshape themselves into those who can embrace the existing and face the challenge of achieving continuities. The world needs to build upon itself, from its own waste, its own mistakes, its lessons and its own abandoned potential, rather than to constantly produce the new. It needs to recreate. RE is born here.

RE:MAKE

RE:USE

RE:BUILD

RE:VIVE

RE:CLAIM

**WHERE IS THE LINE
BETWEEN NEEDS AND
LUXURIES?**

The first, practical step towards a change is eliminating the unnecessary and excessive from the process. To be an architect, one must first be human. Therefore, we stepping from the professional domain back into a personal sphere, asking ourselves where to draw the line between a need and a luxury. When to renounce and when to struggle for more?

RE:DUCE

RE:NOUNCE

RE:LEASE

RE:GAIN

RIJEKA



14°26'E/45°20'N



CONTRADICTIONS & DIVERSITY









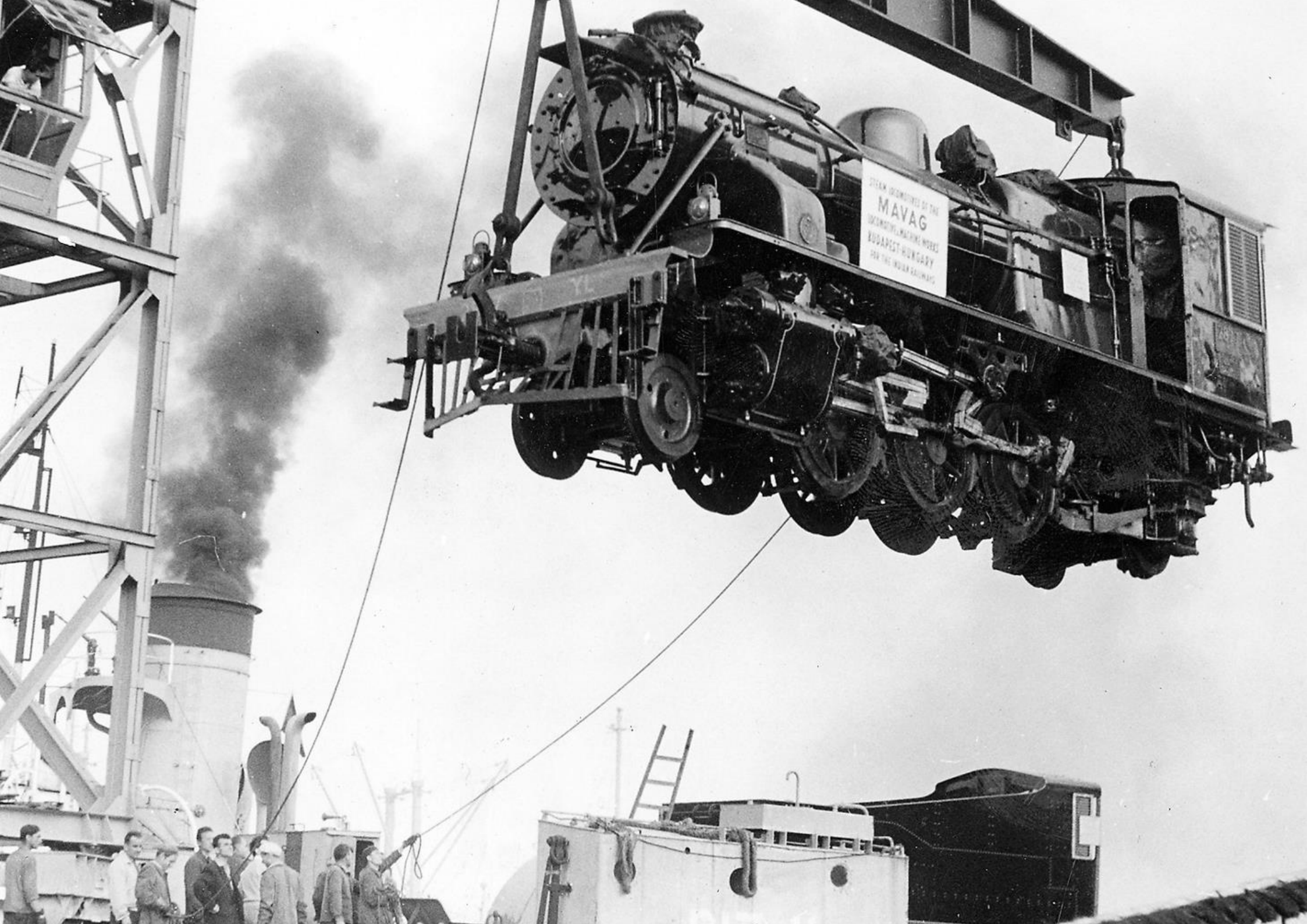
FREEDOM & TOLERANCE



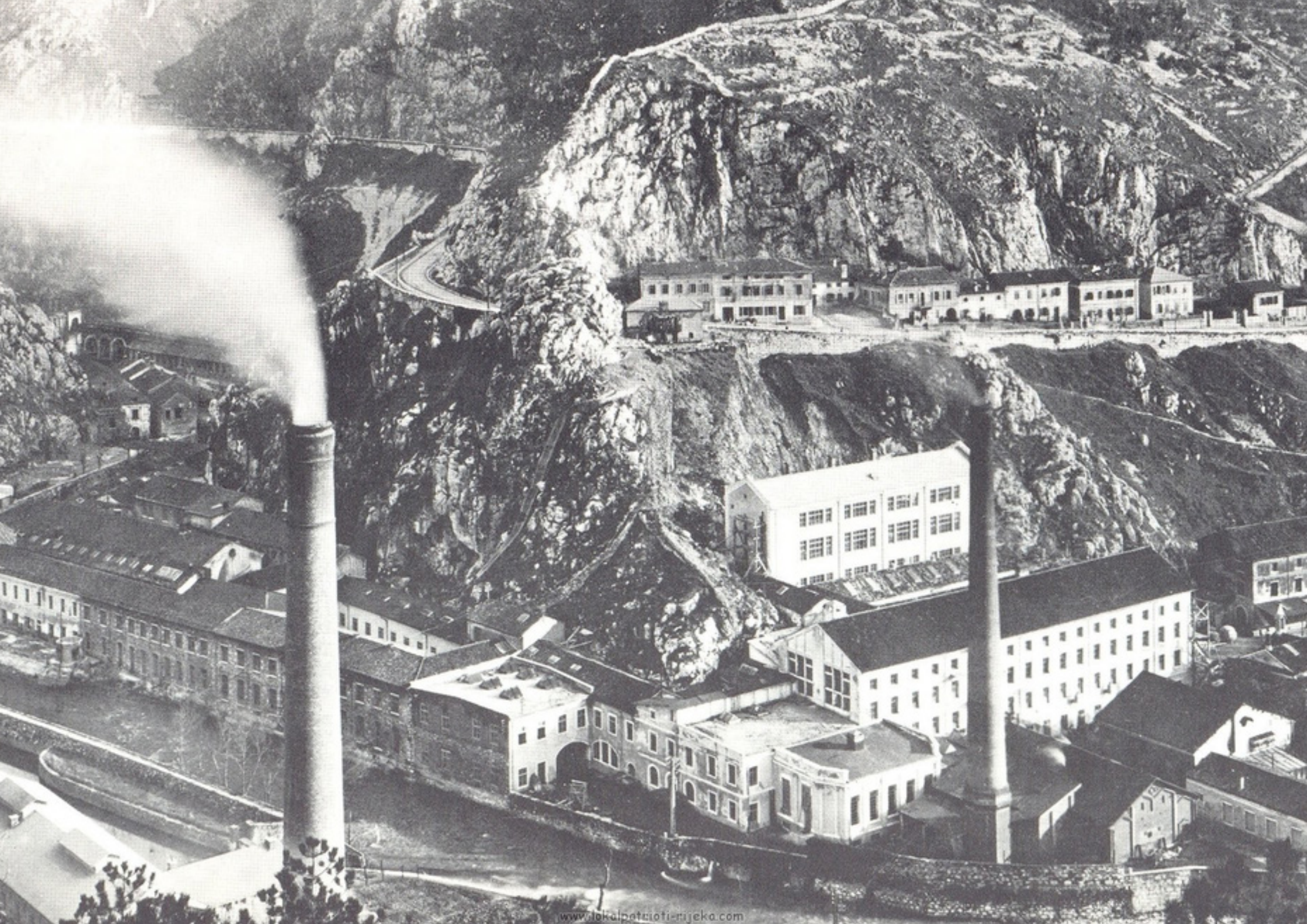




HARBOUR & INDUSTRY







DEINDUSTRIALIZATION







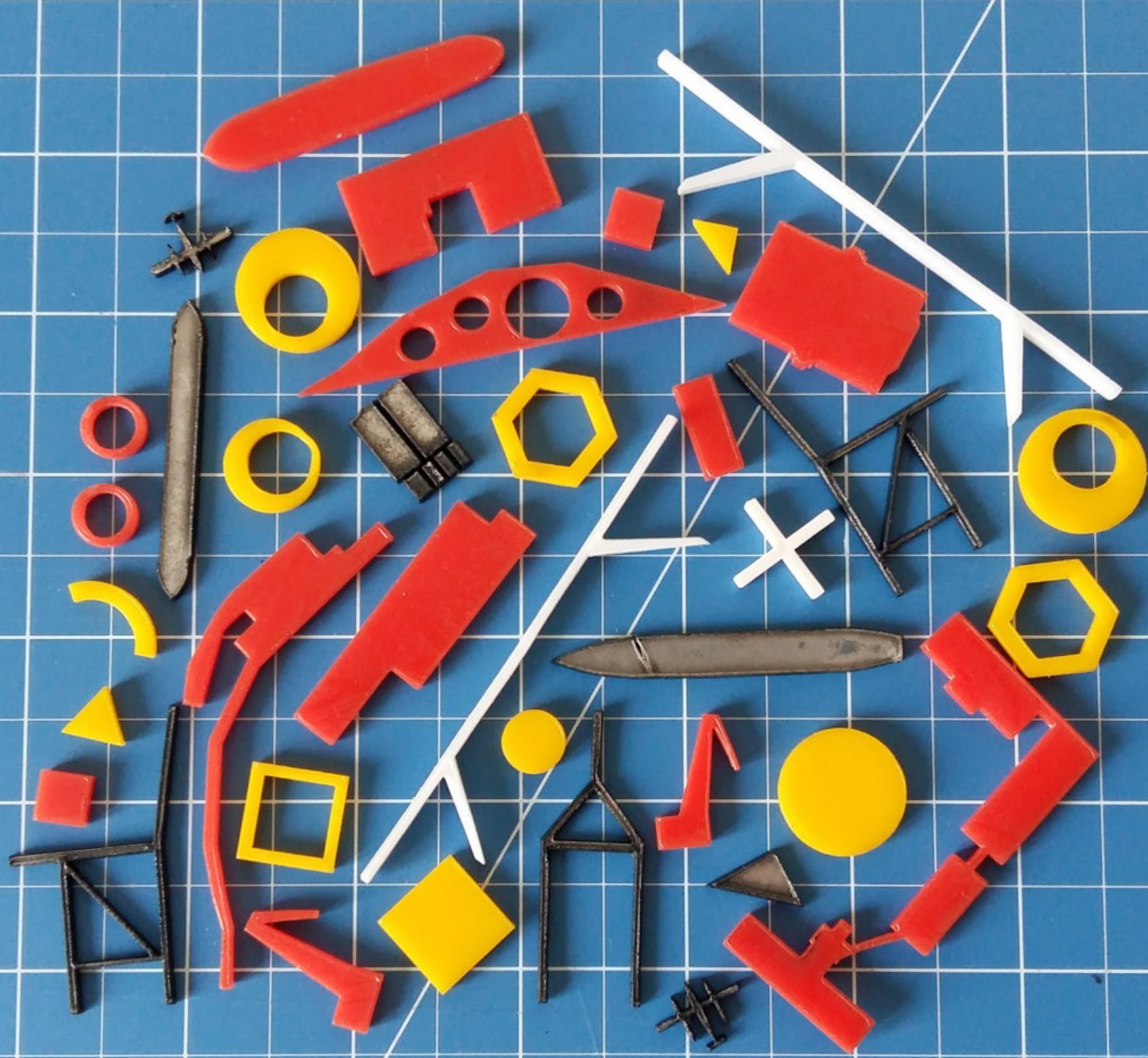
PU R 115 SABLJAŠ

PORT OF
DIVERSITY



RIJEKA 2020 -
PORT OF
DIVERSITY

The image features the text 'RIJEKA 2020 - PORT OF DIVERSITY' in a bold, black, sans-serif font. The text is arranged in three lines. The first line is 'RIJEKA 2020 -', the second is 'PORT OF', and the third is 'DIVERSITY'. The text is surrounded by various colorful geometric shapes: yellow semi-circles, blue squares, red circles, blue triangles, and small red and yellow dots. The background is white.



EASA SITE



CITY CENTRE

CITY MARKET

HARTERA

TRSAT

IOEX

EXPORT

MOLO LONGO

BEACH

JOIN US AS A...

...TUTOR

Tutors are the backbone of the assembly, who run various workshops selected among all the received proposals. They coordinate and lead participants in their work and oversee the whole process and make sure that the results are good.

Workshops can be led by individual tutors or groups of up to four tutors. Tutors are not only architects and architecture students: EASA is an open platform for interdisciplinary exchange.

Read the Tutor Pack to inform yourself better about the theme, location and how to tutor at RE:EASA and submit your workshop proposal.

CALL 1/3 - 8/4/2018



RESULTS 20/4/2018

Participants are the biggest group of people at EASA who represent more than 50 nations around Europe and abroad. They live, work and have fun together for two weeks. As EASA is a self-sustaining community, all the participants take upon themselves the responsibility to clean, cook and contribute to creating a healthy, inspiring and productive environment.

NCs (National Contacts) are responsible for assembling their national team through a process they find best suiting. Participants apply to them. Later on, chosen participants register to RE:EASA.

...PARTICIPANT

CALL DATES
VARY BY COUNTRY



REGISTRATION 29/4-6/5/2018

RE is a prefix, occurring originally in loanwords from Latin, used with the meaning 'again' or 'back'.

RE means acknowledging the presently or formerly existing and acting upon it.

RE is dealing with the past or present to sort things out for the future.

RE is aware of the circular nature of reality and interconnection of things.

RE ackles the matter at hand for the sake of revealing a different kind of order or value.

CHOOSE YOUR "RE:____"
AND IMPLEMENT IT
ON A SUBJECT OF
YOUR CHOICE.

You may use the format/media of any kind (essay, poster, music, video, a recording of a performance ...) You should submit your solution to your NCs along with other info they may require.

PARTICIPANT TASK

Helpers are the force that keeps the event going, an extension to the organizing team. They are usually experienced EASA-ians who understand the structure of the event, but this is not a rule. Some of their tasks are working on the info-point, taking care of the toolbox, helping in the kitchen, driving materials to workshops, tending the bar...

...HELPER

CALL 14/4 - 6/5/2018



RESULTS 20/5/2018

...GUEST

There is always a fair number of guests at EASA: mostly older EASA-ians who drop in to say 'hi' for a few days, but also new members of the community who cannot stay for the whole duration of the event or those who simply want to check out what EASA is. If they want to, guests can make a deal with tutors to help out in one or more workshops during their stay.



The participating fee covers the accommodation, food (breakfast, lunch and dinner) and all the basic, sanitation and mandatory stuff to keep the event running. The fees are divided into 5 groups, according to the financial circumstances of each country:

300 €

Austria, Belgium, Denmark, England, Finland, France, Germany, Iceland, Ireland, Liechtenstein, Luxembourg, Malta, The Netherlands, Northern Ireland, Norway, Scotland, Sweden, Switzerland, Wales

240 €

Cyprus, Italy, Spain, Poland, Slovakia, Czech Republic, Estonia + Croatia (moved one group upwards in regard to minimal travel expenses)

180 €

Hungary, Latvia, Lithuania, Portugal, Slovenia

120 €

Bulgaria, Greece, Montenegro, Romania, Turkey, Russia, Serbia

60 €

Albania, Armenia, Azerbaijan, Belarus, Bosnia and Herzegovina Georgia, Kosovo, Macedonia, Moldova, Ukraine, CLEA, NASA, International

Fees for tutors and helpers are reduced by 50 % according to the country's fee. The minimal fee is 60 €.

FEES

As RE:EASA approaches, more and more documents with important information for each part-taking group will keep on coming.

WWW.EASACRO.INFO

Keep an eye on our webpage as all the important announcements will be published there.

EASA CRO FB & INSTAGRAM

Do not forget to like and follow!

MEET US &
KEEP UP

WAITING FOR
YOUR CRAZY
MINDS AND
LOVELY
HEARTS!

RE:ÉASA IS SUPPORTED BY

PART OF SWEET & SALT FLAGSHIP
UNDER RIJEKA 2020 - EUROPEAN
CAPITAL OF CULTURE PROJECT



RIJEKA 2020
EUROPEAN
CAPITAL
OF CULTURE

